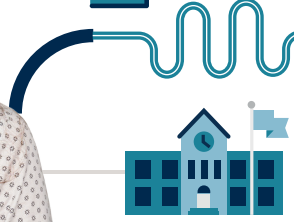


TEACHERS COLLEGE ENROLLMENT CHECKLIST

REQUIREMENTS, STEPS, AND DEADLINES FOR ENROLLMENT



This step-by-step guide will help you navigate the process of applying, being admitted, and beginning your WGU Tennessee degree program.

THE STEPS AND DEADLINES FOR ENROLLMENT

Apply for Admission and Pay the Application Fee

You may apply for admission online at any time by visiting tennessee.wgu.edu/applynow. The application fee is \$65. You can mail a check or pay online using a credit card; if you need help paying online, call the Bursar's Office at **1-877-435-7948 ext. 3105**.

Note: WGU Tennessee does not profit from application fees as they only offset a small portion of admission and enrollment costs.

Submit Your Official Transcripts

Have your transcripts sent directly to WGU Tennessee from the institution(s) you attended. Transcripts should be received by the 1st of the month prior to your intended start date.

Learn more about how to send in official transcripts at

tennessee.wgu.edu/transfer.

Complete the WGU Tennessee Readiness Assessment (Undergraduate Students Only)

The WGU Tennessee Readiness Assessment is a multi-part online test designed to determine your likelihood of success at WGU Tennessee. Your Enrollment Counselor can answer questions regarding this assessment.

Readiness Assessment requirements vary by program; see website for details.

Be Admitted to WGU Tennessee

The admission decision is based on many factors, including your results from the Readiness Assessment, your prior college experience, and the amount of time you can devote to your studies each week.

Make Tuition and Financial Aid Arrangements

Your first tuition payment is due prior to your intended start date. If you plan to use financial aid, we strongly encourage you to complete the financial aid process as soon as possible. Once the financial aid process is complete and your first tuition payment is made, you can begin your orientation, which starts after the 15th of every month.

Complete Your Intake Interview

In addition to requesting transcripts and making tuition arrangements, you'll need to complete a 20 to 30-minute Intake Interview to finalize your enrollment and officially establish your program start date. Intake Interviews typically occur one week prior to your intended start date.

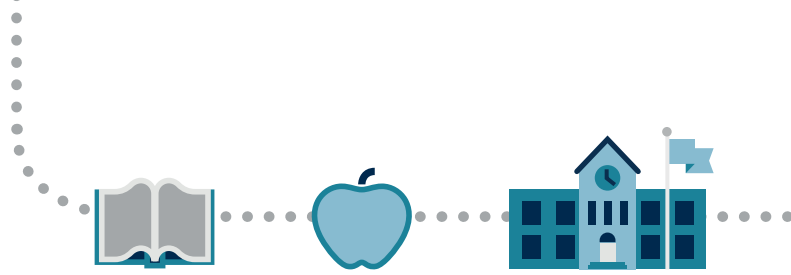
Complete Orientation

This orientation will acquaint you with WGU Tennessee's unique competency-based academic approach and link you to the various learning resources you'll utilize throughout your program.

Begin Your Unique WGU Tennessee Experience

You'll work with a dedicated mentor to develop your individualized Degree Plan that will chart your path towards completing your degree.

TEACHERS COLLEGE SPECIAL ADMISSION REQUIREMENTS



Degrees from the **WGU Tennessee Teachers College** emphasize mastery of skills and knowledge that are essential for continued advancement.

SPECIAL ADMISSION REQUIREMENTS FOR PROGRAMS LEADING TO INITIAL TEACHER CERTIFICATION

Students who are seeking initial teacher licensure in a bachelor's, post-baccalaureate, or master's degree program must also pass a state-specific basic skills test for the state in which they reside prior to their Demonstration Teaching (student teaching) practicum experience. This requirement can be met either prior to admission or before beginning the Foundations of Teaching subject area once you have begun your WGU Tennessee program. For current admission requirements for the WGU Tennessee Teachers College, please visit tennessee.wgu.edu/admissions/tc_requirements.

WGU Tennessee's teacher licensure programs include Demonstration Teaching—a student teaching practicum that takes place in an actual classroom. You must submit to a criminal background check prior to entering the classroom for this component of your program.

Note: this program is not for already licensed teachers. People seeking licensure in additional fields should look into the endorsements we offer.

Special Admission Requirements for Programs Leading to Endorsement

- Copy of a valid teaching license
- Official transcripts that demonstrate you have earned a bachelor's degree from a recognized, accredited university

Additional Program-Specific Requirements

B.A. in Mathematics (5–9 or 5–12), M.A. Mathematics Education (K–6, 5–9, or 5–12) Degree Programs

- Proof of college-level pre-calculus or calculus course completion with a grade of C or better

B.A. in Science (5–9), B.A. in Science (5–12, Geosciences), B.A. in Science (5–12, Biological Science) Degree Programs

- Proof of college-level algebra course completion with a grade of C or better
- Proof of college-level natural science course (chemistry, biology, physics, or geosciences) completion, which includes a lab, with a grade of C or better

B.A. in Science (5–12, Chemistry), B.A. in Science (5–12, Physics) Degree Programs

- Proof of college-level pre-calculus or calculus course completion with a grade of C or better
- Proof of college-level natural science course (chemistry, biology, physics, or geosciences) completion, which includes a lab, with a grade of C or better

M.S. in Educational Leadership Degree Program

- Essay submission
- Practicum site agreement

